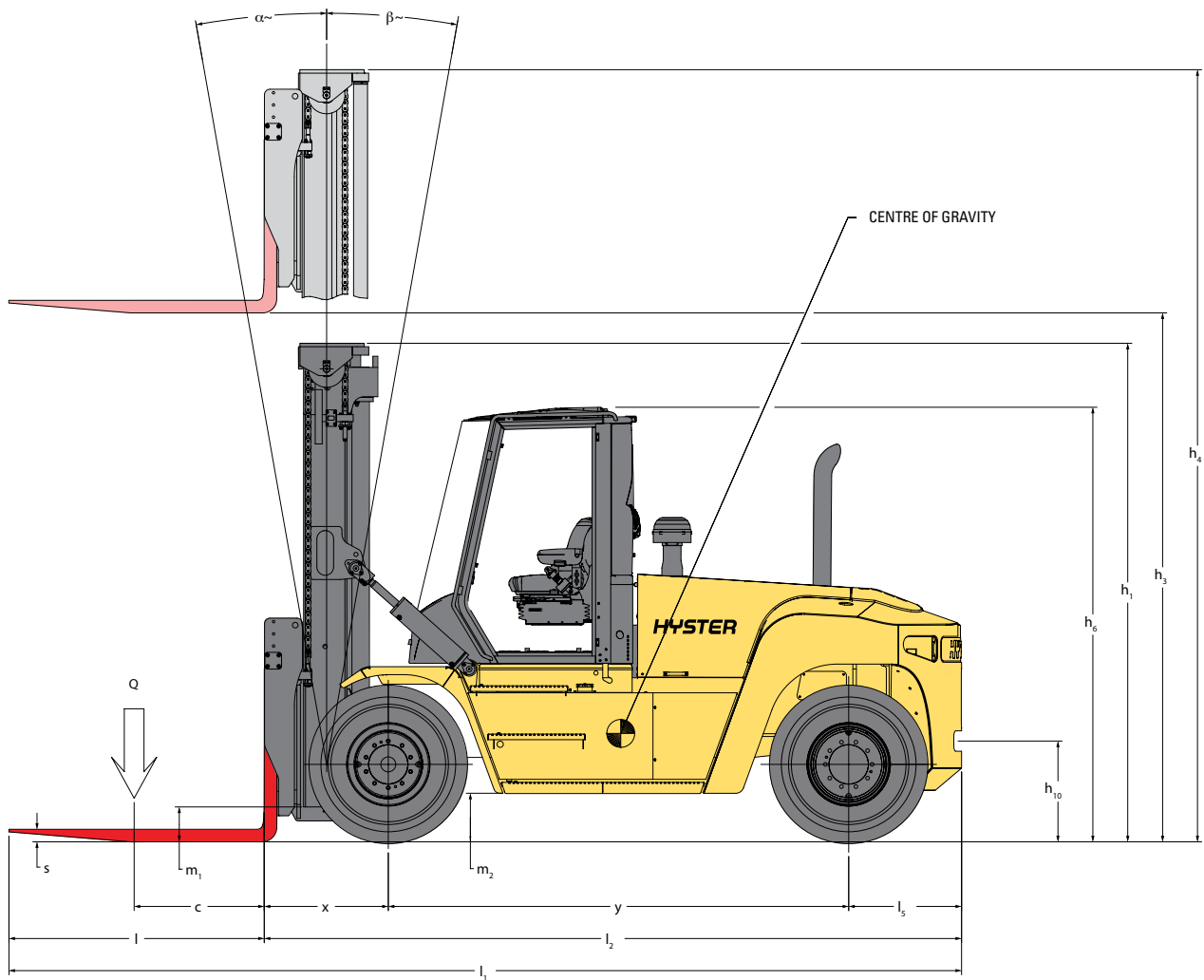




H10-16XD6-12 SERIES TECHNICAL GUIDE



► DIMENSIONS



☉ = Centre of gravity of unladen truck

$A_{ST} = W_a + x + l_6 + a$ (if $b_{12}/2 < b_{13}$)

$A_{ST} = W_a + ((l_6+x)^2 + (b_{12}/2-b_{13})^{0.5} + a$ (if $b_{12}/2 > b_{13}$ and $W_a > b_{13} \cdot b_{12}/2$)

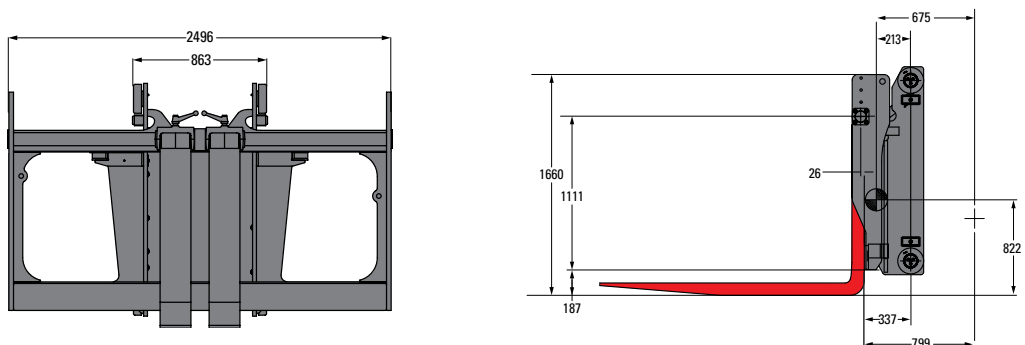
$A_{ST} = b_{13} + b_{12}/2 ((l_6+x)^2 + (b_{12}/2-b_{13})^{0.5} + a$ (if $b_{12}/2 > b_{13}$ and $W_a < b_{13} \cdot b_{12}/2$)

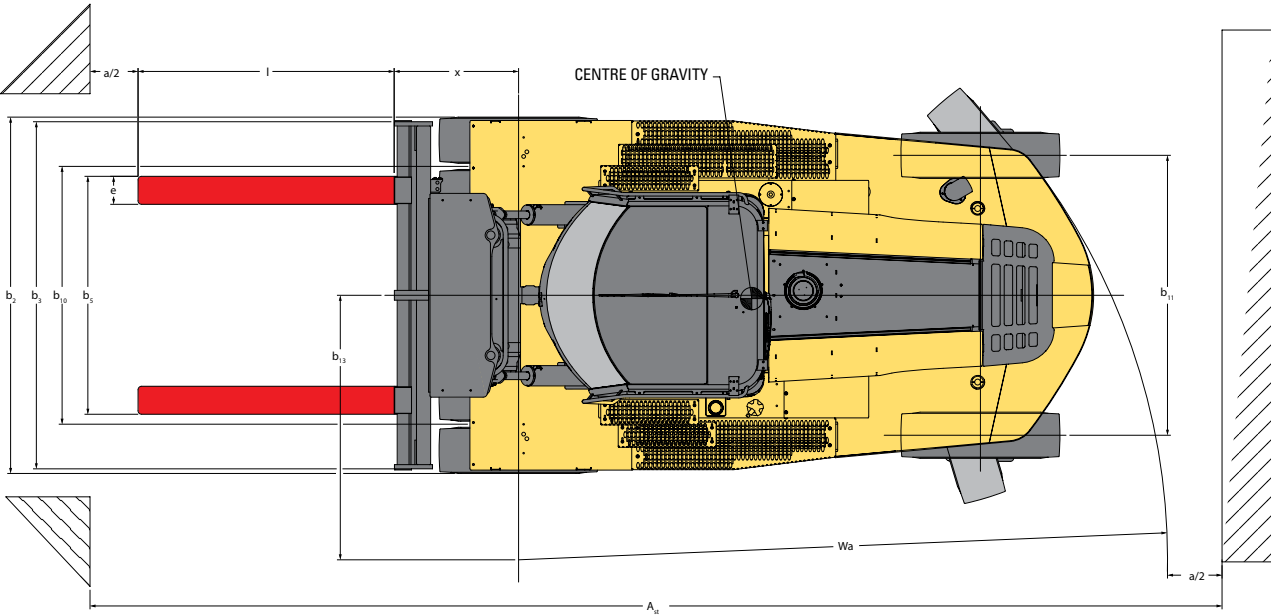
a = Minimum operating clearance = 10% of A_{ST}
(VDI standard = 200 mm BITA recommendation = 300 mm)

l_6 = load lengths

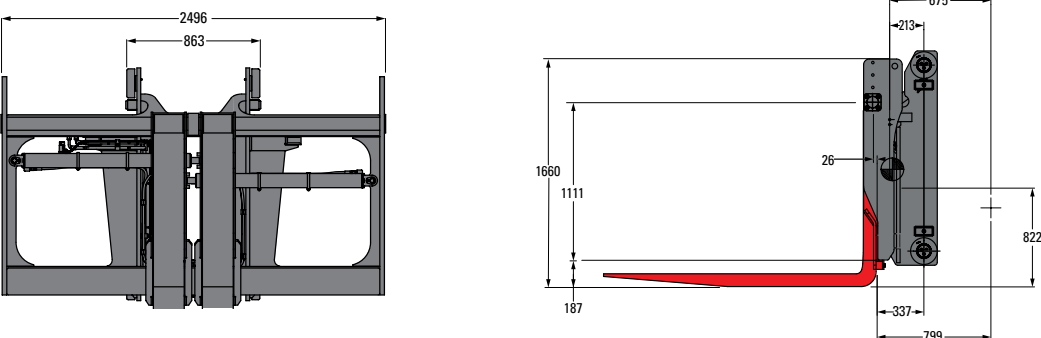
b_{12} = load width

Standard pin type carriage

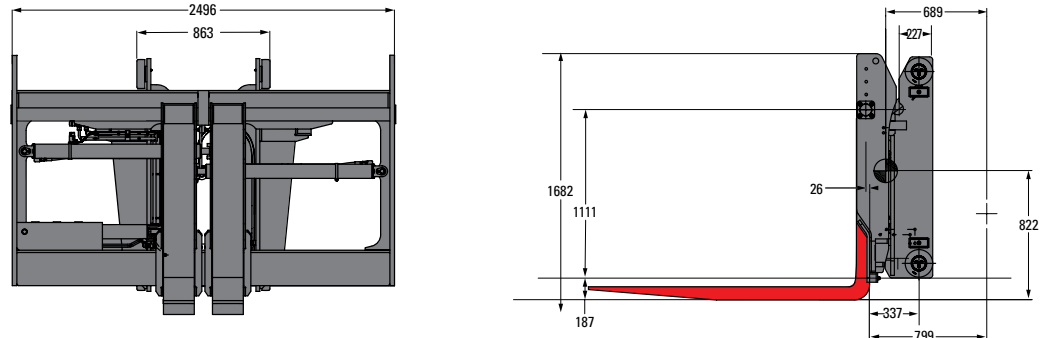




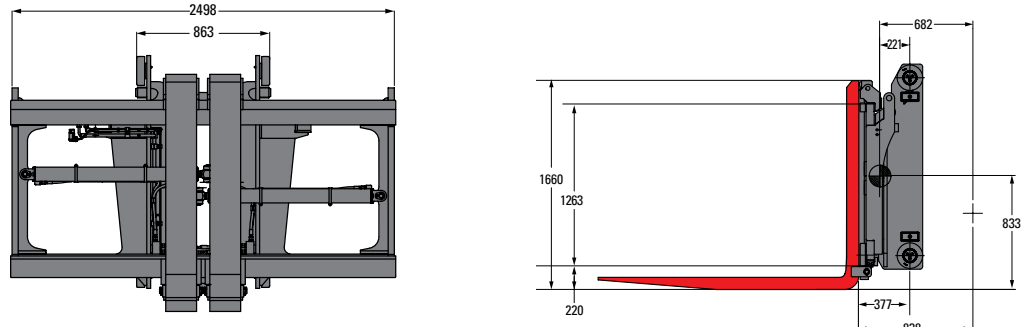
Pin type carriage with fork positioner



Pin type integral sideshift frame carriage with fork positioner



Dual function sideshift carriage with fork positioner



➤ H13XD6 / H14XD6 SPECIFICATIONS

			HYSTER		HYSTER	
GENERAL	1-1	Manufacturer			HYSTER	
	1-2	Model designation			H13XD6	
	1-3	Powertrain / drivetrain			Diesel	
	1-4	Operator type			Seated	
	1-5	Rated capacity / rated load	Q	kg	13,500	
	1-6	Load centre distance	c	mm	600	
	1-8	Load distance	x	mm	889	
	1-9	Wheelbase	y	mm	3,300	
	WEIGHT	2-1	Service weight (1)			18,403
2-2		Axle loading with load, front / rear		kg	29,537	2,366
2-3		Axle loading without load, front / rear		kg	9,945	8,458
WHEELS	3-1	Tyre type			Pneumatic	
	3-2	Tyre size, front			12.00-20 20PR	
	3-3	Tyre size, rear			12.00-20 20PR	
	3-5	Wheels, number front / rear (x = driven wheels)			4X / 2	
	3-6	Tread, front	b ₁₀	mm	1,842	
	3-7	Tread, rear	b ₁₁	mm	2,000	
DIMENSIONS	4-1	Mast tilt, forward / backward	α/β	deg	15° / 12°	
	4-2	Height, mast lowered	h ₁	mm	4,193	
	4-3	Free lift	h ₂	mm	0	
	4-4	Lift	h ₃	mm	4,910	
	4-5	Height, mast extended	h ₄	mm	6,648	
	4-7	Height of overhead guard (open cab)	h ₆	mm	3,083	
	4-7-1	Height of overhead guard (closed cab)	h ₆	mm	3,110	
	4-7-2	Height of overhead guard (closed cab w/ aircon)	h ₆	mm	3,110	
	4-7-3	Height of overhead guard (closed cab w/ strobe light)	h ₆	mm	3,205	
	4-7-4	Height of overhead guard (closed cab w/ work lights)	h ₆	mm	3,259	
	4-7-5	Height of overhead guard (closed cab w/ aircon & strobe light)	h ₆	mm	3,235	
	4-8	Seat height to SIP	h ₇	mm	1,903	
	4-12	Coupling height	h ₁₀	mm	717	
	4-16	Overhang	l ₅	mm	809	
	4-19	Overall length	l ₁	mm	6,828	
	4-20	Length to face of forks	l ₂	mm	4,998	
	4-21	Overall width	b ₂	mm	2,541	
	4-22	Fork dimensions ISO 2331	s/e/l	mm	90 / 200 / 1.830	
	4-23	Fork carriage type			85 mm pin type carriage	
	4-24	Fork carriage width	b ₃	mm	2,496	
	4-25	Distance between fork-arms	b ₅	mm	470	2,420
	4-30	Sideshift	b ₈	mm	0	
	4-31	Ground clearance, laden, below mast	m ₁	mm	245	
4-32	Ground clearance, centre of wheelbase	m ₂	mm	341		
4-33	Load dimension b ₁₂ × l ₆ crossways		mm	1,200	1,200	
4-34-1-2	Aisle width, with 200 mm operating clearance	Ast	mm	6,873		
4-34-1-3	Aisle width, with 10% operating clearance	Ast	mm	7,340		
4-35	Outside turning radius	W _a	mm	4,584		
4-36	Internal turning radius	b ₁₃	mm	1,890		
PERFORMANCE	5-1	Travel speed, with / without load (2)		km/h	27.4	29.0
	5-1-1	Travel speed, with / without load backwards (2)		km/h	On request	
	5-2	Lifting speed, with / without load		m/s	0.41	0.46
	5-3	Lowering speed with / without load		m/s	0.50	0.48
	5-5	Drawbar pull - 1.6 km/h 1 mph, with / without load		kN	109	111
	5-5-1	Drawbar pull - stall, with / without load		kN	121	123
	5-7	Gradeability - 1.6 km/h 1 mph, with / without load		%	37	37
	5-7-1	Gradeability - stall, with / without load		%	42	37

- (1) Based on Stage IV engine and standard pin type carriage
(2) Travel speed unladen limited at 25 km/h as factory default

H10XD12 / H16XD6 SPECIFICATIONS



			H10XD12		H16XD6			
	Unit							
GENERAL	1-1	Manufacturer		HYSTER		HYSTER		
	1-2	Model designation		H10XD12		H16XD6		
	1-3	Powertrain / drivetrain		Diesel		Diesel		
	1-4	Operator type		Seated		Seated		
	1-5	Load capacity at load centre, nominal (1)	Q	kg	10,500		16,500	
	1-6	Load centre distance	c ₁	mm	1,200		600	
	1-8	Load distance	x	mm	889		889	
	1-9	Wheelbase	y	mm	3,300		3,300	
	WEIGHT	2-1	Service weight (1)		19,356		20,008	
2-2		Axle loading with load, front / rear		kg	27,342	2,514	33,853	2,655
2-3		Axle loading without load, front / rear		kg	10,195	9,161	9,908	10,100
WHEELS	3-1	Tyre type		Pneumatic		Pneumatic		
	3-2	Tyre size, front		12.00-20 20PR		12.00-20 20PR		
	3-3	Tyre size, rear		12.00-20 20PR		12.00-20 20PR		
	3-5	Wheels, number front / rear (x = driven wheels)		4X / 2		4X / 2		
	3-6	Tread, front	b ₁₀	mm	1,842		1,842	
	3-7	Tread, rear	b ₁₁	mm	2,000		2,000	
	DIMENSIONS	4-1	Mast tilt, forward / backward	α/β	deg	15° / 12°		15° / 12°
4-2		Height, mast lowered	h ₁	mm	4,193		4,193	
4-3		Free lift	h ₂	mm	0		0	
4-4		Lift	h ₃	mm	4,910		4,910	
4-5		Height, mast extended	h ₄	mm	6,648		6,648	
4-7		Height of overhead guard (closed cab)	h ₆	mm	3,083		3,083	
4-7-1		Height of overhead guard (closed cab)	h ₆	mm	3,110		3,110	
4-7-2		Height of overhead guard (closed cab w/ strobe light)	h ₆	mm	3,110		3,110	
4-7-3		Height of overhead guard (closed cab w/ work lights)	h ₆	mm	3,205		3,205	
4-7-4		Height of overhead guard (closed cab w/ work lights)	h ₆	mm	3,259		3,259	
4-7-5		Height of overhead guard (closed cab w/ aircon & strobe light)	h ₆	mm	3,235		3,235	
4-8		Seat height to SIP	h ₇	mm	1,903		1,903	
4-12		Coupling height	h ₁₀	mm	717		717	
4-16		Overhang	l ₅	mm	809		809	
4-19		Overall length	l ₁	mm	7,438		6,828	
4-20		Length to face of forks	l ₂	mm	4,998		4,998	
4-21		Overall width	b ₂	mm	2,541		2,541	
4-22		Fork dimensions ISO 2331	s/e/l	mm	90 / 200 / 2.440		90 / 200 / 1.830	
4-23		Fork carriage type			85 mm pin type carriage		85 mm pin type carriage	
4-24		Fork carriage width	b ₃	mm	2,496		2,496	
4-25		Distance between fork-arms	b ₅	mm	470	2,420	470	2,420
4-30		Sideshift	b ₈	mm	0		0	
4-31		Ground clearance, laden, below mast	m ₁	mm	245		245	
4-32		Ground clearance, centre of wheelbase	m ₂	mm	341		341	
4-33		Load dimension b ₁₂ × l ₆ crossways		mm	1,200	1,200	1,200	1,200
4-34-1-2		Aisle width, with 200 mm operating clearance	Ast	mm	8,073		6,873	
4-34-1-3		Aisle width, with 10% operating clearance	Ast	mm	8,660		7,340	
4-35	Outside turning radius	W _a	mm	4,584		4,584		
4-36	Internal turning radius	b ₁₃	mm	1,890		1,890		
PERFORMANCE	5-1	Travel speed, with / without load (2)		km/h	27.4	29.0	27.4	29.0
	5-1-1	Travel speed, with load locked / without load (2)		km/h	On request		On request	
	5-2	Lifting speed, with / without load backwards		m/s	0.41	0.46	0.41	0.46
	5-3	Lowering speed with / without load		m/s	0.50	0.48	0.50	0.48
	5-5	Drawbar pull - 1.6 km/h 1 mph, with / without load		kN	109	111	108	111
	5-5-1	Drawbar pull - stall, with / without load		kN	121	123	120	123
	5-7	Gradeability - 1.6 km/h 1 mph, with / without load		%	40	34	32	38
	5-7-1	Gradeability - stall, with / without load		%	46	34	36	38

- (1) Based on Stage IV engine and standard pin type carriage
 (2) Travel speed unladen limited at 25 km/h as factory default

MAST AND CAPACITY INFORMATION

H13XD6 - H14XD6 RATED CAPACITY KG@ 600 MM LOAD CENTRE

	Lift height $h_3 + s$ (mm)	Lowered height h_1 (mm)	Free lift height $h_2 + s$ (m)	Extended height h_4 (mm)	Standard pin type carriage (kg)		Sideshift frame pin type carriage (kg)		QD DFSSFP carriage (kg)	
					H13XD6	H14XD6	H13XD-6	H14XD6	H13XD6	H14XD6
2 STAGE NFL	2750	3068	0	4398	13,500	14,500	13,400	14,500	13,100	14,400
	3000	3193	0	4648	13,500	14,500	13,400	14,500	13,100	14,400
	3250	3318	0	4898	13,500	14,500	13,400	14,500	13,100	14,400
	3500	3443	0	5148	13,500	14,500	13,400	14,500	13,100	14,400
	3750	3568	0	5398	13,500	14,500	13,400	14,500	13,100	14,400
	4000	3693	0	5648	13,500	14,500	13,400	14,500	13,100	14,400
	4500	3943	0	6148	13,500	14,500	13,400	14,500	13,100	14,400
	4750	4068	0	6398	13,500	14,500	13,400	14,500	13,100	14,400
	5000	4193	0	6648	13,500	14,500	13,400	14,500	13,100	14,400
	5500	4443	0	7148	13,320	14,320	13,160	14,320		
	6000	4693	0	7648	13,100	14,140	12,940	14,140		
	6250	4818	0	7898	12,980	14,040	12,840	14,040		
	6500	4943	0	8148	12,880	13,940	12,720	13,940		
7000	5193	0	8648	12,600	13,740	12,460	13,740			

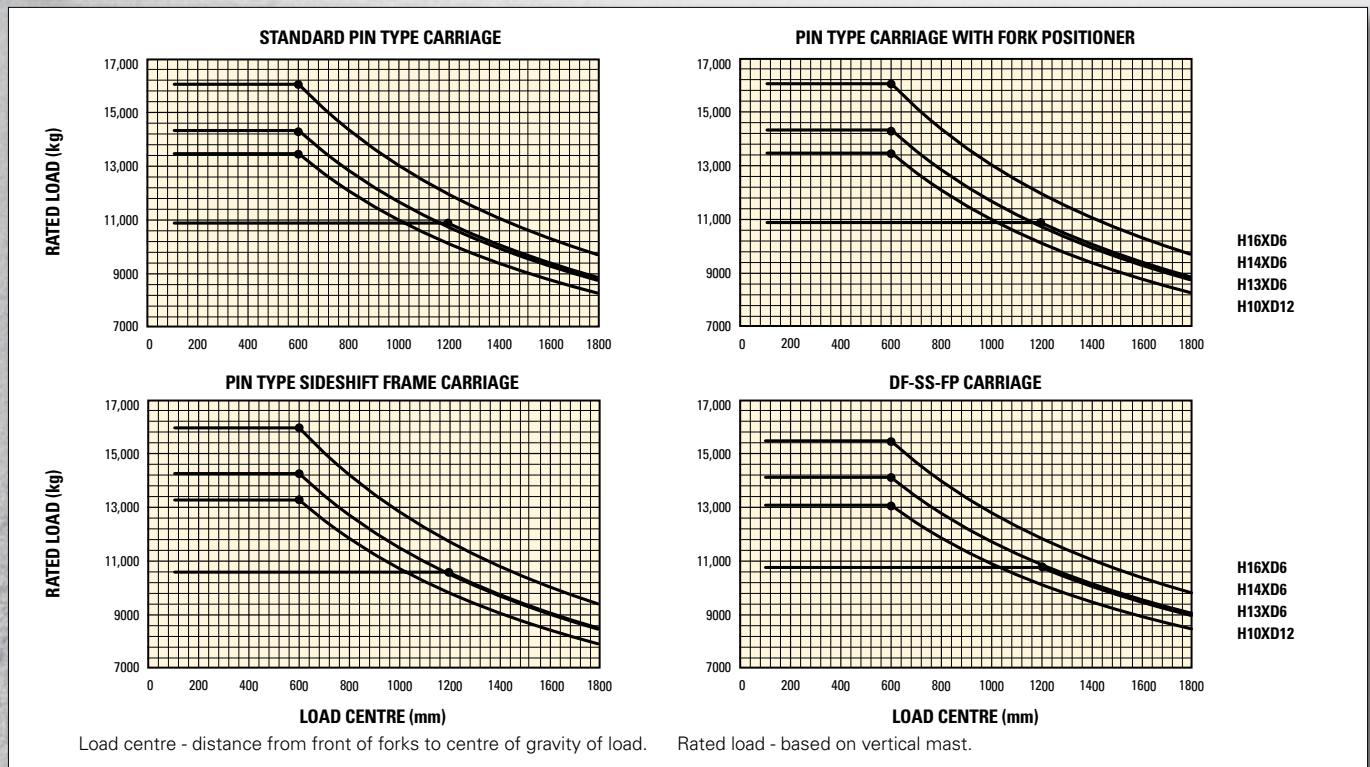
Capacity will vary based on side shift and back-tilt

H10XD12 - H16XD6 RATED CAPACITY KG@ 600 MM LOAD CENTRE

	Lift height $h_3 + s$ (mm)	Lowered height h_1 (mm)	Free lift height $h_2 + s$ (m)	Extended height h_4 (mm)	Standard pin type carriage (kg)		Sideshift frame pin type carriage (kg)		QD DFSSFP carriage (kg)	
					H10XD12	H16XD6	H10XD12	H16XD6	H10XD12	H16XD6
2 STAGE NFL	2750	3068	0	4398	10,500	16,500	10,400	16,400	10,200	16,100
	3000	3193	0	4648	10,500	16,500	10,400	16,400	10,200	16,100
	3250	3318	0	4898	10,500	16,500	10,400	16,400	10,200	16,100
	3500	3443	0	5148	10,500	16,500	10,400	16,400	10,200	16,100
	3750	3568	0	5398	10,500	16,500	10,400	16,400	10,200	16,100
	4000	3693	0	5648	10,500	16,500	10,400	16,400	10,200	16,100
	4500	3943	0	6148	10,500	16,500	10,400	16,400	10,200	16,100
	4750	4068	0	6398	10,500	16,500	10,400	16,400	10,200	16,100
	5000	4193	0	6648	10,500	16,500	10,400	16,400	10,200	16,100
	5500	4443	0	7148	10,340	16,320	10,220	16,200		
	6000	4693	0	7648	10,180	16,120	10,060	15,920		
	6250	4818	0	7898	10,100	16,000	9,980	15,800		
	6500	4943	0	8148	10,020	15,880	9,900	15,680		
7000	5193	0	8648	9,820	15,600	9,700	15,400			

Capacity will vary based on side shift and back-tilt

RATED CAPACITIES



GENERAL	1-1	Manufacturer			HYSTER
	1-2	Model designation			H13XD6 / H14XD6 / H10XD12 / H16XD6
	1-3	Powertrain / drivetrain			Diesel

ENGINE	7-1	Engine manufacturer / model			Cummins / QSB 6.7
	7-1a	EPA / CE compliance			Stage IV
	7-2	Engine power output according to ISO 1585		kW	122
	7-2-1	Engine power output - Peak		kW	125
	7-3	Rated speed		min ⁻¹	2,300
	7-3-1	Engine torque @rpm (1/min)		Nm/min ⁻¹	732 @ 1,500
	7-4	Number of cylinders / displacement		# / cm ³	6 / 6,700
	7-8	Alternator output		Amps	120
	7-9	Electrical system voltage		V	24
	7-10	Battery voltage, rated capacity		V / Ah	24 / 102

DRIVE	8-1	Drive control / Transmission		Type / #	Hydrodynamic transmission
	8-2	Transmission manufacturer / type		Type / #	ZF / WG161
	8-4	Transmission speeds forward / backward		#	3 / 3
	8-5	Coupling		Type	Torque Converter
	8-6	Wheel drive / drive axle manufacturer / type		Type / #	Kessler D81
	8-11	Service brake		Type	Oil immersed (wet) disc
	8-12	Parking brake		Type	Spring applied, dry disc on drive axle

MISC	10-1	Operating pressure for attachments		bar	22.5
	10-2	Oil volume for attachments		l/m	100
	10-3	Hydraulic tank capacity		l	140
	10-4	Fuel tank capacity		l	158
	10-4-1	DEF/AdBlue Tank capacity		l	19
	10-5	Steering design			Hydraulic power steering
	10-6	Number of steering rotation			4.5
	10-7	Sound pressure level at driver's seat (3)	Lpaz	dB(A)	TBC
	10-7-1	Sound power level during the working cycle (3)	Lwaz	dB	105.1
	10-7-1	Towing coupling, model / type			Yes / Pin

NOTES:

Specifications are affected by the condition of the vehicle and how it is equipped, as well as the nature and condition of the operating area. Inform your dealer of the nature and condition of the intended operating area when purchasing your Hyster® truck.

- (1)** Based on Stage IV engine and standard pin type carriage
- (2)** Travel speed laden limited at 25 km/h as factory default
- (3)** Stage IV engine based on low mount exhaust

All capacities are according to EN1551.

NOTICE:

Care must be exercised when handling elevated loads. Operators must be trained and must read, understand and follow the instructions contained in the Operating Manual.


All values are nominal values and they are subject to tolerances. For further information, please contact the manufacturer.

Hyster products are subject to change without notice.

Lift trucks illustrated may feature optional equipment. Values may vary with alternative configurations.

CERTIFICATION: Hyster lift trucks meet the design and construction requirements of B56.1-1969, per OSHA Section 1910.178(a)(2), and also comply with the B56.1 revision in effect at time of manufacture. Certification of compliance with the applicable ANSI standards appears on the lift truck. Performance specifications are for a truck equipped as described under Standard Equipment on this Technical Guide. Performance specifications are affected by the condition of the vehicle and how it is equipped, as well as by the nature, condition of the operating area, proper service and maintenance of the vehicle. If these specifications are critical, the proposed application should be discussed with your dealer.

NOTE: Specifications, unless otherwise listed, are for a standard truck without optional equipment.

 Safety: This truck conforms to the current EU and ANSI requirements.

Specification data is based on VDI 2198.

➤ FEATURES AND OPTIONS

PERFORMANCE	STD	OPT
Cummins QSB 6.7L diesel engine rated 122 kW Stage IV / 164 hp Tier 4F	X	
Stage IV / Tier 4 compliant	X	
Variable geometry turbocharger, water cooled	X	
Hibernate Idle	X	
On-demand cooling fan	X	
Performance modes	X	
Powertrain protection system	X	
Heavy duty air intake	X	
Heavy duty air intake (raised)		X
Low mount exhaust (below chassis)	X	
High mount exhaust		X
ZF Transmission WG161 3-speeds forward/3-speeds reverse auto-shifting	X	
Kessler D81 drive axle with wet disc brakes	X	
DRIVE	STD	OPT
Speed limiter - unconditional and customer adjustable		X
Travel speed limiter - loaded (adjustable)	X	
12.00 - 20 20PR Trelleborg Pneumatic Bias Ply drive and steer tyres	X	
12.00 - R20 Michelin XZM Radial drive and steer tyres		X
12.00 - R20 Trelleborg Radial drive and steer tyres		X
12.00 - 20 Pneumatic Shaped Solid drive and steer tyres		X
Spare wheels and tyres		X
LIFT	STD	OPT
90cc dual pump hydraulic system	X	
111cc dual pump hydraulic system		X
On-demand load sensing hydraulic system	X	
Automatic throttle-up when lifting (in neutral or inching)	X	
Variable lap mast for low roller forces	X	
2 Stage Non Free Lift mast	X	
2 Stage Full Free Lift mast		X
3 Stage Full Free Lift mast		X
Mast tilt - 5° Forward / 6° Back		X
Mast tilt - 5° Forward / 12° Back		X
Mast tilt - 15° Forward / 10° Back		X
Mast tilt - 15° Forward / 12° Back	X	
Mast tilt - 20.5° Forward / 7° Back		X
Hydraulic accumulator		X
Pressure compensated lowering	X	
Hydraulic system temperature protection		X
HANDLING	STD	OPT
Mast tilt indicator - mechanical		X
2400mm (94.3") Pin type standard carriage	X	
2400mm (94.3") Pin type carriage with simultaneous and independent fork positioner		X
2400mm (94.3") Pin type integral sideshift carriage		X
2400mm (94.3") Pin type integral sideshift carriage with simultaneous fork positioner		X
2400mm (94.3") Pin type integral sideshift carriage with simultaneous and independent fork positioner		X
2400mm (94.5") QD Hook type dual function sideshift carriage with simultaneous and independent fork positioner		X

HANDLING (continued)	STD	OPT
2400mm (94.4") QD Hook type dual function sideshift carriage with simultaneous fork positioner and 2 auxiliary functions		X
2500mm (98") high load backrest (for lumber applications)		X
1760mm (69") high load backrest		X
2010mm (79") high load backrest		X
2500mm (98") high load backrest (for lumber applications)		X
1220mm x 75mm x 200mm (48" long x 3" thick x 7.9" wide) forks	X	
Pin type forks (various sizes)		X
Pin type forks for lumber applications		X
Hook type quick disconnect DFSSFP forks (various sizes)		X
ERGONOMICS	STD	OPT
Open operator compartment (without doors and screens)	X	
Enclosed operator cabin		X
Powered tilt operator compartment for service		X
Manual tilt operator compartment for service	X	
Isolated cabin mounting for low noise and vibration	X	
Operator presence system	X	
Mechanical suspension seat	X	
Air suspension seat		X
Deluxe air suspension seat		X
Low backrest seat	X	
High backrest seat		X
Additional armrest on left side		X
Cloth seat cover		X
Vinyl seat cover	X	
Seat heating		X
Seat ventilation		X
2-point high visibility seatbelt	X	
3-point high visibility seatbelt		X
Lateral seat sliding mechanism		X
Floor mat	X	
Coat hook	X	
Dimmable interior light		X
Front, top and rear wipers	X	
"H"-pattern front wiper		X
"I"-pattern front wiper	X	
Laminated glass operator compartment front window		X
Top window with armoured glass - FOPS certified (enclosed operator cabin)	X	
Steel bars under armoured glass top window (enclosed operator cabin)		X
Tinted operator compartment windows (all)		X
Tinted operator compartment top window		X
Lexan top window		X
Plexiglass shield in front of front window		X
Wire mesh installed on top of operator compartment		X
Vertical steel bar front window guard		X
Operator shield wire mesh		X
7" Integrated performance display	X	
Touchpoint™ mini levers hydraulic control integrated in control arm	X	
Joystick hydraulic control integrated in control arm		X

FEATURES AND OPTIONS



ERGONOMICS (continued)	STD	OPT
Steering wheel without spinner knob		X
Steering wheel with spinner knob	X	
Directional control lever	X	
Hyster Monotrol pedal directional control		X
Directional control on Mini-levers or Joystick		X
Park brake - manual	X	
Park brake - automatic		X
Interior wide angle mirrors	X	
Heater with adjustable speed fan	X	
Diesel fueled cabin heater		X
Telescoping and tilting steering column	X	
DC/DC converter 24 volt/12 volt with socket		X
Air conditioning		X
Automatic climate control		X
Reading light		X
Sun shades on top and rear		X
Sun visors front window		X
Trainer seat		X
Recirculation fan		X
Additional recirculation fan		X
Accessory mounting bar on cab front right pillar		X
Document holder on cab front right pillar		X
Heated top- and/or rear window		X
Radio preparation set-up (wiring, two speakers and antenna)		X
Bluetooth radio with 2 speakers and antenna		X
VISIBILITY	STD	OPT
Exterior mirrors mounted to cab		X
Rear view camera system		X
Radar object detection system		X
Halogen work lights	X	
LED work lights		X
High Performance LED work lights		X
Two head lights mounted on front fenders		X
Four mast mounted work lights		X
Four cabin mounted work lights		X
Two rearward work lights mounted on the cabin		X
LED stop/tail/brake lights	X	
Turn signals, hazard and marker lights (LED)	X	
OPERATION	STD	OPT
Air horn 112 dBA		X
Electric horn 105 dBA	X	
Visible alarm – amber strobe light, key switch activated	X	
Visible alarm – amber strobe light, switch and key switch activated*		X
Audible alarm – reverse direction activated 82–102 dB(A), self-adjusting	X	
Audible alarm – reverse direction white noise		X
Forward / reverse motion alarm		X
Blue LED spotlight – rear / front and rear		X

OPERATION (continued)	STD	OPT
Tyre pressure monitoring system		X
Air-conditioning or automatic Climate control off with open door		X
Automatic truck shutdown with timer		X
Preventative maintenance reminder in display		X
Lockable battery disconnect switch	X	
Battery jump start connector (NATO plug)		X
Truck Start with key switch and start button	X	
Operator password (display) for truck start		X
Seatbelt interlock for truck start		X
Power distribution group with fuses	X	
Fuses partially replaced by electric circuit breakers		X
Non-lockable fuel cap	X	
Lockable fuel cap		X
Diesel fuel inlet strainer in filler neck		X
Hyster Tracker wireless asset management system		X
Hyster Tracker wireless asset management - Access / Verification		X
Hyster Tracker wireless asset management - Monitoring		X
Auto greasing system for basic truck and outer mast		X
Centralized greasing provision for upper chain sheaves	X	
24 volt electrical system	X	
Engine block heater 110 and 240 volt		X
Steer wheel lug nut protection		X
Front mud flaps		X
Rear mud flaps		X
Lifting eyes - 2 front and 2 rear		X
Wire mesh belly pan		X
Wire mesh and plates belly pan		X
APPEARANCE	STD	OPT
Hyster yellow paint base truck	X	
Special paint base truck		X
Operator compartment special paint (outside only)		X
Operator compartment special paint (complete cabin)		X
Hazard warning striping on counterweight		X
SUPPLEMENTAL	STD	OPT
Literature package	X	
Operator's manual	X	
CE certification*	X	
Warranty: 12 Months / 2,000 Hours Parts & Labour manufacturer's warranty		X
Warranty: 12 Months / 2,000 Hours Parts manufacturer's warranty	X	

*Standard or optional in selected markets. Other options available through Special Products Engineering Department (SPED). Contact Hyster for details.

> FRONT END EQUIPMENT

RANGE OF 2 STAGE NFL MASTS



RANGE OF PIN TYPE AND HOOK TYPE FORKS



2496MM PIN TYPE STANDARD CARRIAGE



**2496MM PIN TYPE CARRIAGE WITH SIMULTANEOUS AND INDEPENDENT FORK POSITIONER
(FOR LUMBER APPLICATIONS)**



2496MM PIN TYPE CARRIAGE WITH SIMULTANEOUS AND INDEPENDENT FORK POSITIONER



2496MM PIN TYPE INTEGRAL SIDESHIFT FRAME CARRIAGE



**2498MM QD HOOK TYPE DUAL FUNCTION SIDESHIFT WITH -
SIMULTANEOUS AND INDEPENDANT FORK POSITIONER**



Branches

VICTORIA

Melbourne - Springvale (Head Office)

📍 1574 Centre Rd
Springvale, VIC, 3171
☎ [03] 9547 8000

Melbourne - Truganina

📍 501 Robinsons Rd
Truganina, VIC, 3029
☎ [03] 9394 4000

NEW SOUTH WALES

Sydney (State Office)

📍 219 Newton Rd
Wetherill Park, NSW, 2164
☎ [02] 8788 1777

Port Kembla

📍 20-26 Flinders Street
Port Kembla, NSW, 2505
☎ 13 22 54

QUEENSLAND

Brisbane (State Office)

📍 11 Lombank Street
Acacia Ridge, QLD, 4110
☎ [07] 3373 5111

Rockhampton

📍 62 Glenmore Road
Park Avenue, Rockhampton
QLD 4701
☎ [07] 4922 8874

Townsville

📍 39 Duckworth Street
Garbutt, QLD, 4814
☎ [07] 4778 2000

SOUTH AUSTRALIA/ NORTHERN TERRITORY

Adelaide (State Office)

📍 18-22 Churchill Rd. Nth.
Dry Creek, SA, 5094
☎ [08] 8360 3444

WESTERN AUSTRALIA

Perth (State Office)

📍 Unit 1, 1-9 Kurnall Road
Welshpool, WA, 6106
☎ [08] 9352 9200

Karratha

📍 Lot 3873-Pemberton Road
Karratha, WA, 6714
☎ 13 22 54

TASMANIA

Spreyton

📍 87a Devonport Road
Spreyton, TAS, 7310
☎ [03] 6427 3966

Service Centres

VICTORIA

Bendigo
Warrnambool
Ballarat
Shepparton
Wondonga
Mildura

TASMANIA

Hobart
Launceston
Burnie

NEW SOUTH WALES

Dubbo
Griffith
Tamworth
Newcastle
Wollongong
Canberra
Tumut
Bathurst
Wagga Wagga
Albury
Gosford
Coffs Harbour

QUEENSLAND

Rockhampton
Mackay
Cairns
Gladstone
Townsville
Mt Isa
Toowoomba
Gold Coast
Sunshine Coast

SOUTH AUSTRALIA/NT

Riverland
Darwin

WESTERN AUSTRALIA

Margaret River